

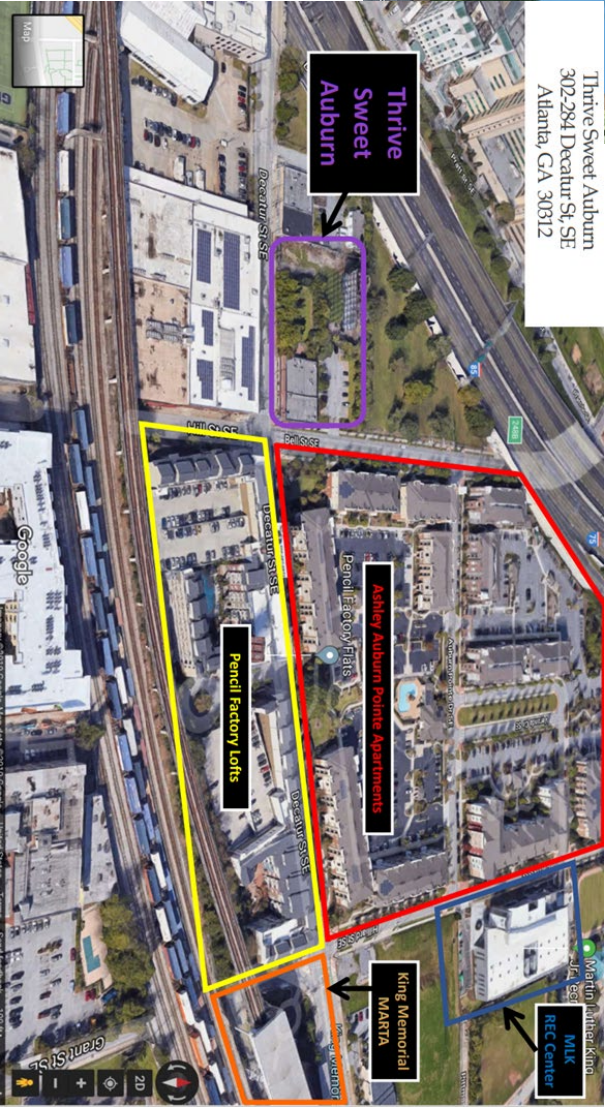
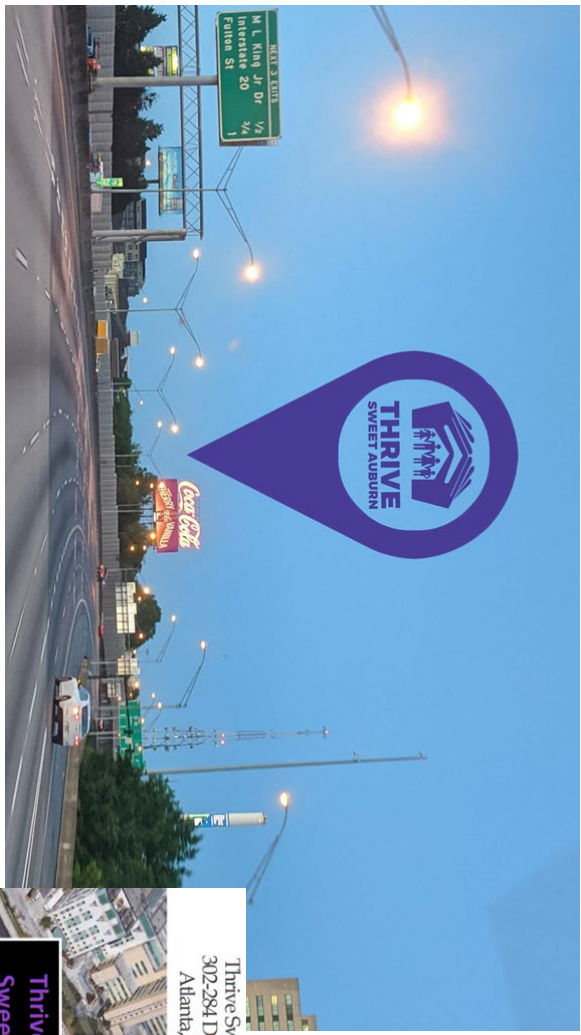
# THRIVE Sweet Auburn – Project Updates Fourth & Sand Association

November 3rd, 2022



[A Service Enriched Development in the Heart of Downtown, Atlanta](#)

# Thrive SWEET AUBURN

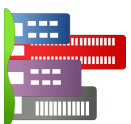
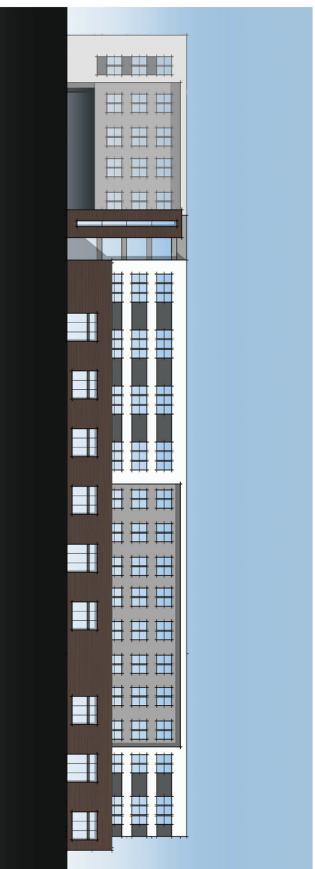


Thrive Sweet Auburn  
302-284 Decatur St, SE  
Atlanta, GA 30312



# The Future – Thrive Sweet Auburn

New construction of a **non-profit-sponsored workforce facility** and **small business incubator with affordable housing** that enhances the living environment for residents and creates a positive impact on the surrounding community.



## Housing

- 117 affordable units
- Studios to 3BR/2BA
- 24 units - 70% AMI
- 70 units - 60% AMI
- 23 units - 40% AMI



## Office Space

- PCCI
- First Step
- CAPN
- Open Hand



## Small Business

Co-location space;  
workforce development



## Parking

# Atlanta Metro Statistical Area (MSA) 2022 Area Median Income (AMI)

Area Median Income (AMI)	1 Person	2 Person	3 Person	4 Person	5 Person	6 Person	7 Person	8 Person
<b>30% AMI</b>	\$20,250	\$23,160	\$26,040	\$28,920	\$31,260	\$33,570	\$35,880	\$38,190
<b>50% AMI</b>	\$33,750	\$38,600	\$43,400	\$48,200	\$52,100	\$55,950	\$59,800	\$63,650
<b>60% AMI</b>	\$40,500	\$46,320	\$52,080	\$57,840	\$62,520	\$67,140	\$71,760	\$76,380
<b>80% AMI</b>	\$54,000	\$61,760	\$69,440	\$77,120	\$83,360	\$89,520	\$95,680	\$101,840
<b>100% AMI</b>	\$67,500	\$77,200	\$86,800	\$96,400	\$104,200	\$111,900	\$119,600	\$127,300
<b>115% AMI</b>	\$77,625	\$88,780	\$99,820	\$110,860	\$119,830	\$128,685	\$137,540	\$146,395
<b>120% AMI</b>	\$81,000	\$92,640	\$104,160	\$115,680	\$125,040	\$134,280	\$143,520	\$152,760
<b>140% AMI</b>	\$94,500	\$108,080	\$121,520	\$134,960	\$145,880	\$156,660	\$167,440	\$178,220

# Thrive

## SWEET AUBURN



**STH**  
SPREADING THE HEALTH

# Thrive Sweet Auburn (TSA) Community Quarterback Board (CQB)

## Role of TSA Community Quarterback Board

### Community Engagement:

Engage residents, community partners and other community stakeholders in identifying resident issues, challenges, solutions and resources. (Resident Survey, Community & Partners Meetings)

### Community Transformation Plan:

Use the community information, insights and perspectives gathered from residents and other community stakeholders to develop a [Community Transformation Plan](#)

# Thrive Sweet Auburn (TSA) Community Quarterback Board (CQB) TSA/CQB Members & Community Partners

## On-Site:

First Step Staffing: Employment  
Our House (CAPN): Healthcare/Wellness  
Mercy Housing Southeast: Resident Services  
Spreading The Health: Juice/Coffee/Café  
Project Community Connections, Inc (PCCI)

## Off-Site:

Atlanta Center for Self-Sufficiency: Staffing Svcs  
Fulton County: Mental Health Services  
Open Hand: Food & Nutrition  
River's Edge: Case Management for PSH

(All partners will deliver services at the Thrive Sweet Auburn Site)

# Thrive Sweet Auburn (TSA) Community Quarterback Board (CQB)

## TSA/CQB Deliverables

- 1) Community Engagement Activities/Documentation
- 2) TSA Resident Survey
- 3) TSA Community Transformation Plan





# Fourth & Sand Questions & Answers

